

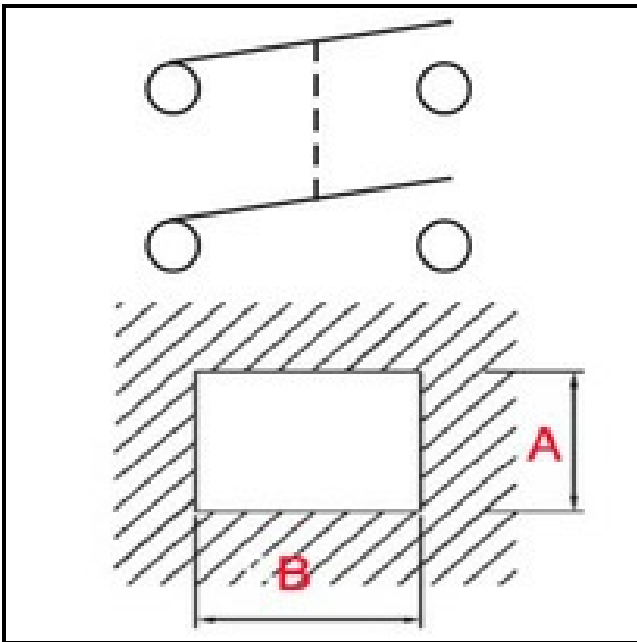
1105216

SWITCH CM SA

Date: 03-08-2025



Technical data



DEPTH MM	B=24mm
WIDTH MM	A=19mm
DIAMETER mm	Ø=16mm
NUMBER OF POLES	POLI/POLES=4
NUMBER OF POSITIONS	0-1
COLOR	GRIGIO/GREY
VOLT	230V

Manufacturer code

ARISTARCO S.P.A.